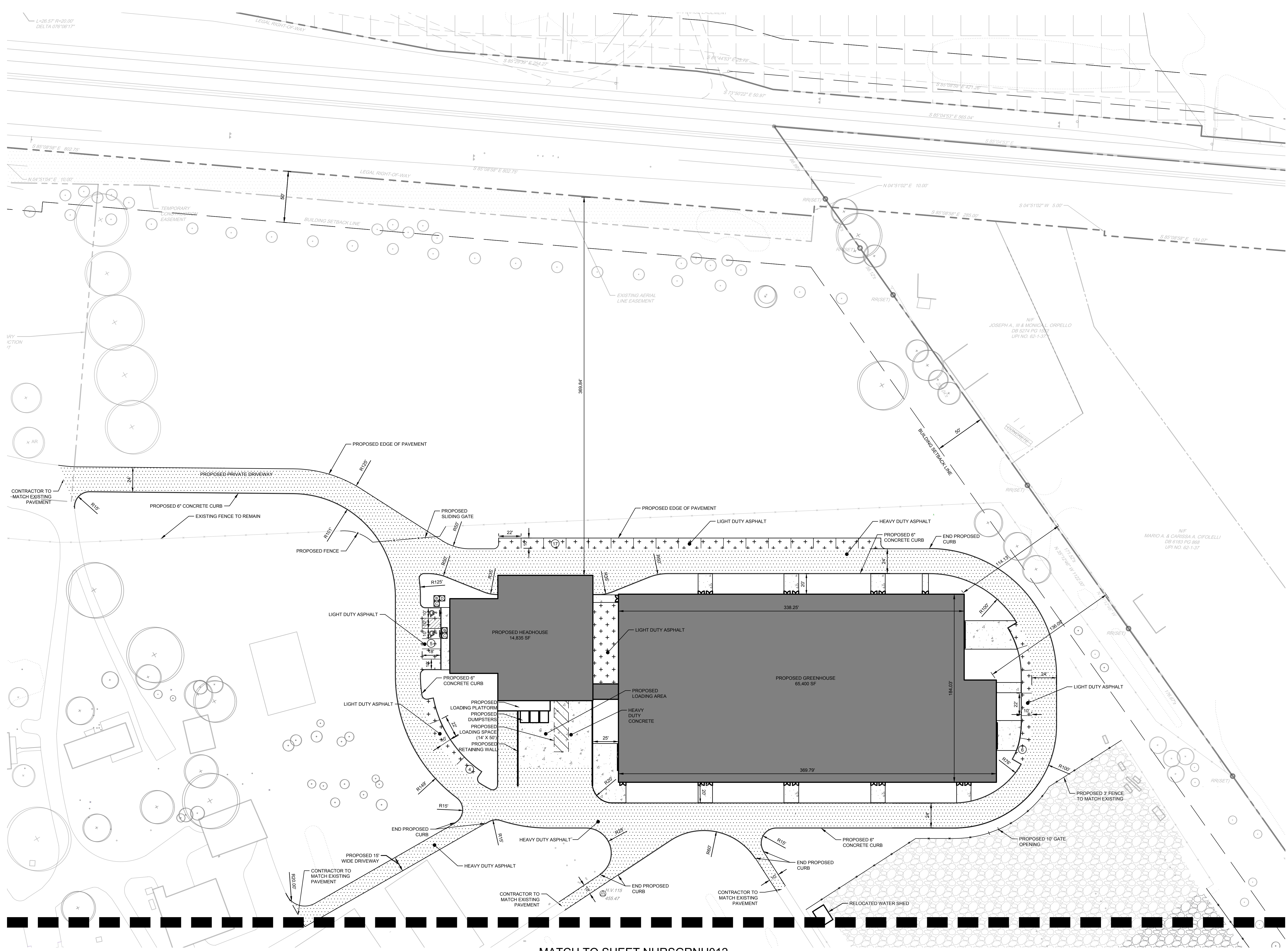


PRELIMINARY  
NOT FOR  
CONSTRUCTION  
8/31/18



MATCH TO SHEET NURSGRNH012



**PENNONI ASSOCIATES INC.**  
One South Church Street, 2nd Floor  
West Chester, PA 19382  
T 610.429.8907 F 610.429.8918

ALL DOCUMENTS PREPARED BY PENNONI ASSOCIATES ARE INSTRUMENTS OF SERVICE IN RESPECT OF THE PROJECT. THEY ARE NOT INTENDED OR REPRESENTED TO BE SUITABLE FOR REUSE BY OWNER OR OTHERS ON THE EXTENSIONS OF THE PROJECT OR ON ANY OTHER PROJECT. ANY REUSE WITHOUT WRITTEN VERIFICATION OR ADAPTATION BY PENNONI ASSOCIATES FOR THE SPECIFIC PURPOSE INTENDED WILL BE AT OWNERS SOLE RISK AND WITHOUT LIABILITY OR LEGAL EXPOSURE TO PENNONI ASSOCIATES AND OWNER SHALL INDEMNIFY AND HOLD HARMLESS PENNONI ASSOCIATES FROM ALL CLAIMS, DAMAGES, LOSSES AND EXPENSES, INCLUDING OUTF OF COURT SETTLEMENTS, THEREFROM.

PRJ #	REV	COMPANY	INITIALS	DATE	DESCRIPTION
1		PENNONI	AT	08/31/18	REVISED PER TWP COMMENTS

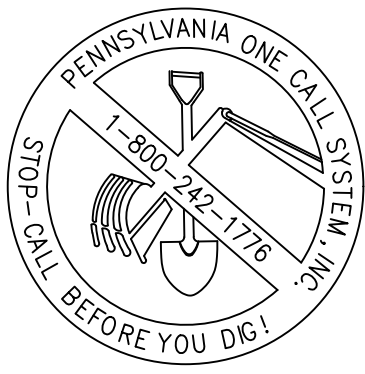
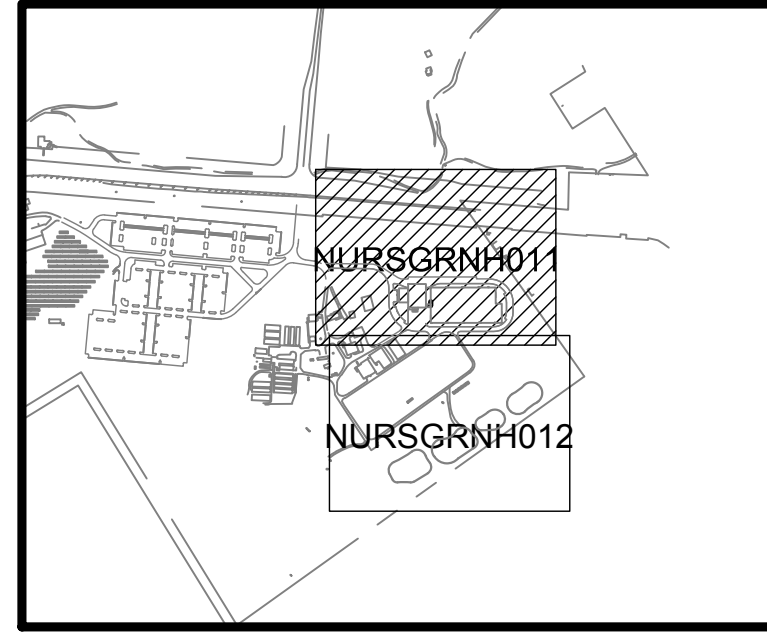
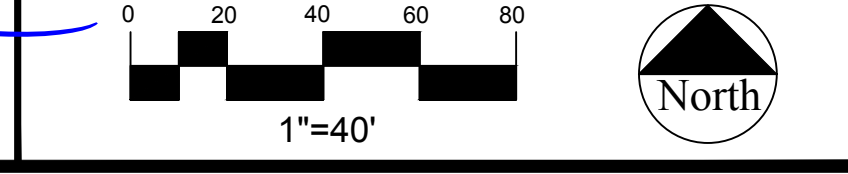
**LONGWOOD GARDENS NURSERY GREENHOUSE**



**SITE PLAN**

DRAWING ORIGINATOR:  
PENNONI ASSOCIATES INC.  
ONE SOUTH CHURCH STREET, 2ND FLOOR  
T 610.429.8907 F 610.429.8918

DRAWN BY:	CHECKED BY:	DRAWING NUMBER:
AT	CRP	<b>NURSGRNH011</b>
DATE:	SCALE:	SHEET #:
2018-06-08	1"=40'	11 OF 41



**CALL BEFORE YOU DIG**  
BEFORE YOU DIG ANYWHERE IN PENNSYLVANIA  
CALL 1-800-242-1776  
PA ACT 287 OF 1974 REQUIRES THREE WORKING DAYS NOTICE TO UTILITIES BEFORE YOU EXCAVATE, DRILL OR BLAST PENNSYLVANIA ONE-CALL SYSTEM, INC. SERIAL NUMBER: 2018110305-000