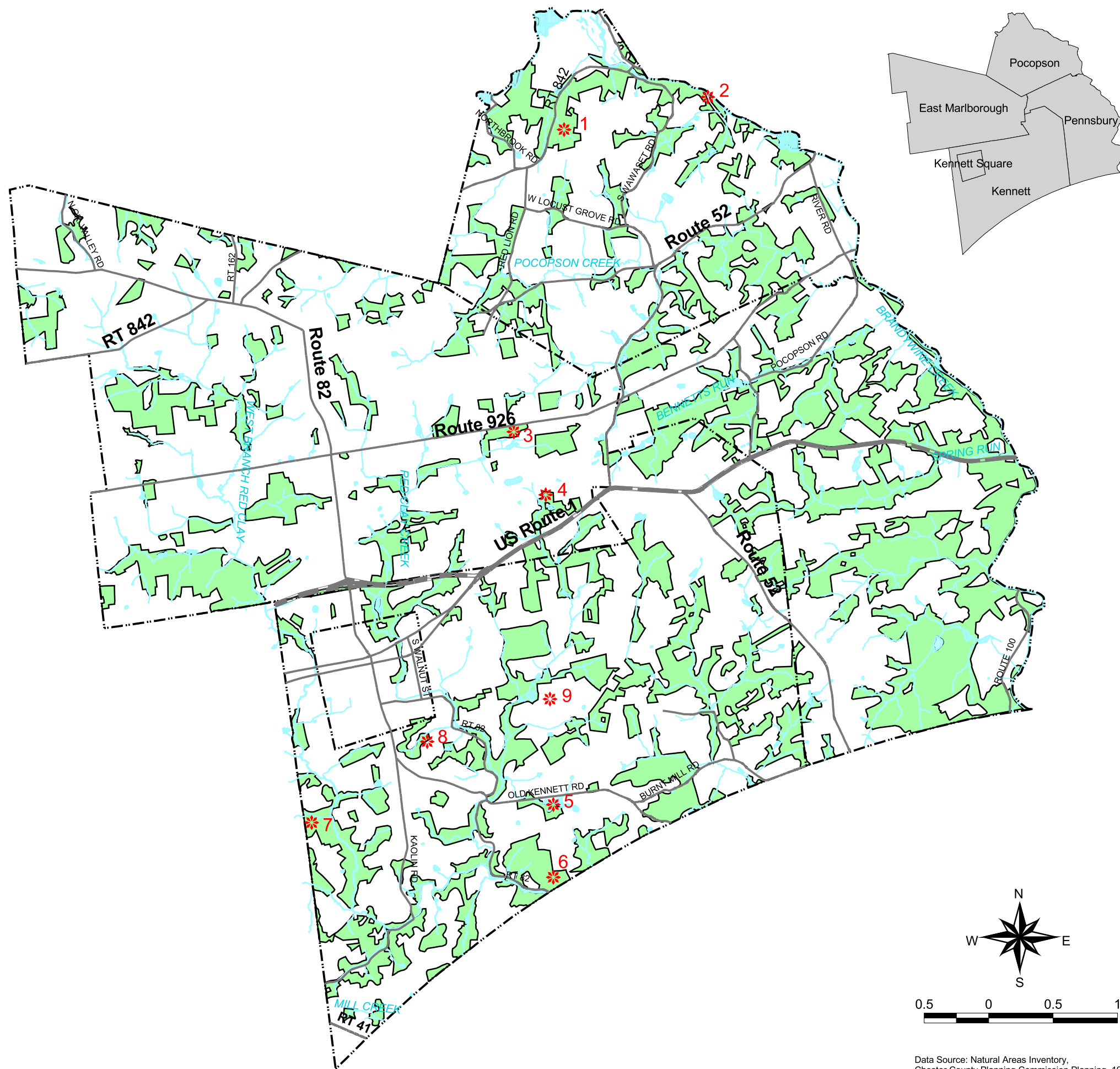






Map 4-5: Woodlands

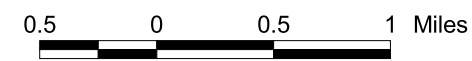
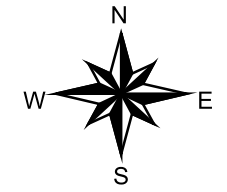


-  Road Network
-  Municipal Borders
-  Streams and Ponds
-  Woodlands

PA Natural Diversity Inventory Sites

1. Myrick Forest - Rare Plant *
2. Wawaset Marsh - Rare Plant *
3. Red Lion Woods - 3 Rare Plants *
4. Red Lion Woods - Rare Plant *
5. Old Kennett Road Site - Rare Plant *
6. State Line Woods - 2 Rare Plants *
7. Rare Animal Species **
8. 4 Rare Animal Species **
9. 1 Rare Plant and 1 Rare Animal Species **

Source: * Chester County Natural Areas Inventory
 ** Kennett Joint Open Space Plan



This map was digitally compiled for internal maintenance and developmental use by the County of Chester, Pennsylvania to provide an index to parcels and for other reference purposes. Parcel lines do not represent actual field surveys of premises. County of Chester, Pennsylvania makes no claims as to the completeness, accuracy or content of any data contained herein, and makes no representation of any kind, including, but not limited to, the warranties of merchantability or fitness for a particular use, nor are any such warranties to be implied or inferred, with respect to the information or data furnished herein.

Kennett Area Regional Planning Commission

Comprehensive Plan

Data Source: Natural Areas Inventory, Chester County Planning Commission Planning, 1994; DVRPC Land Use Data, 1990.

