


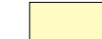


Map B-1: Composite Municipal Future Land Use

-  Road Network
-  Municipal Borders





MUNICIPAL LAND USE DESIGNATION

-  Low Density Residential (<1 dwelling/acre)
-  Medium Density Residential (1 dwelling/acre)
-  High Density Residential (>1 dwelling/acre)
-  Village Commercial/Town Center
-  General Commercial
-  Mixed Use
-  Industrial
-  Institutional

BOROUGH RESIDENTIAL

-  Low Density Residential (4-7 dwellings/acre)
-  Medium Density Residential (7-12 dwellings/acre)
-  High Density Residential (12-20 dwellings/acre)

POTENTIAL LAND USE CONFLICT

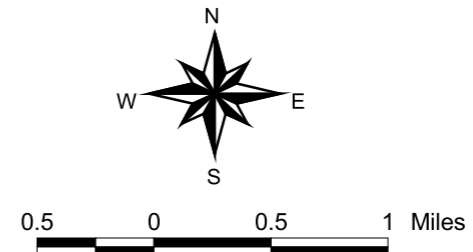
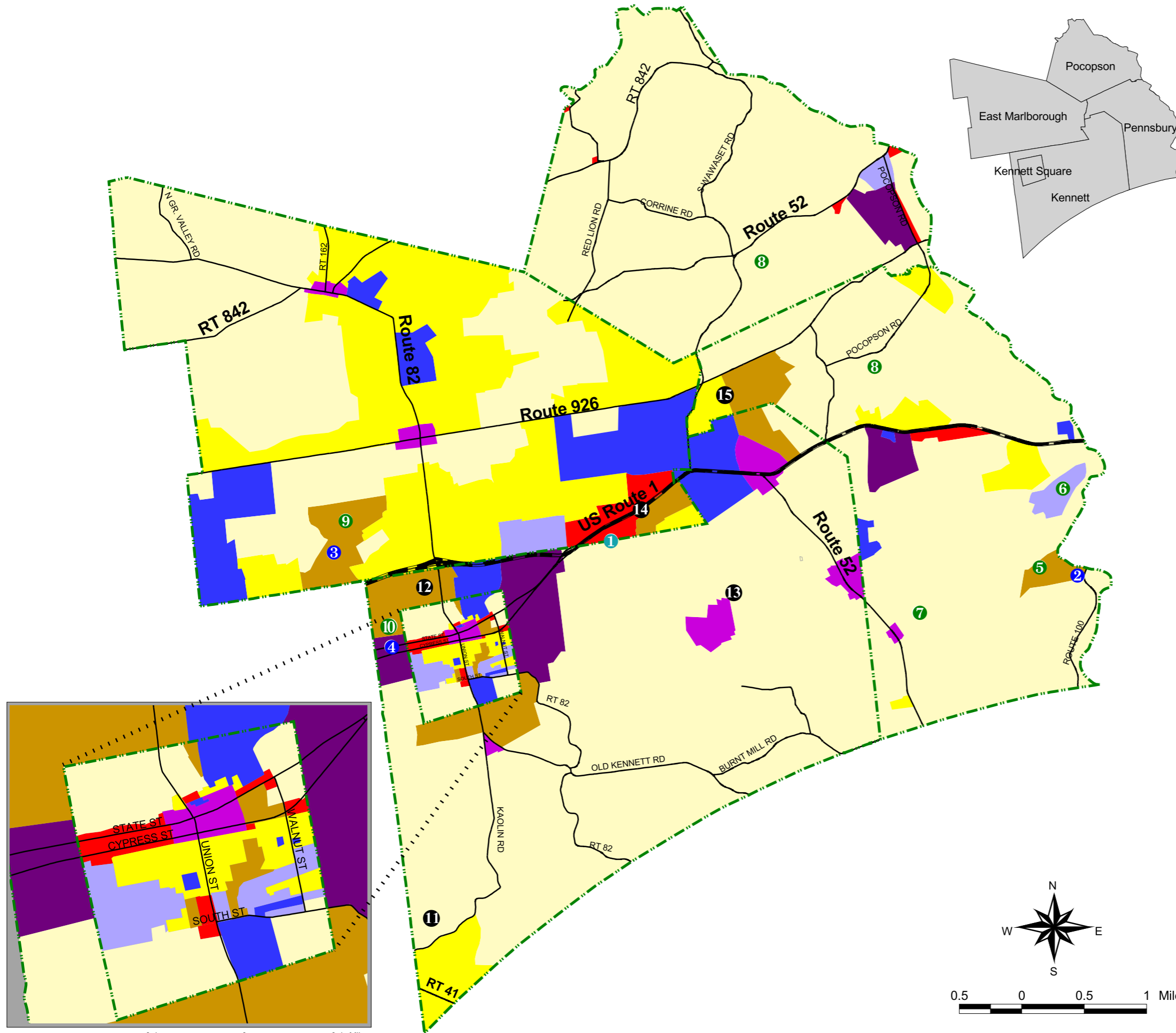
-  Municipal Border Conflict
-  Natural Constraints Conflict
-  Inconsistency with "Landscapes"
-  "Landscapes" Map to be Modified to Resolve Inconsistency

This map was digitally compiled for internal maintenance and developmental use by the County of Chester, Pennsylvania to provide an index to parcels and for other reference purposes. Parcel lines do not represent actual field surveys of premises. County of Chester, Pennsylvania makes no claims as to the completeness, accuracy or content of any data contained hereon, and makes no representation of any kind, including, but not limited to, the warranties of merchantability or fitness for a particular use, nor are any such warranties to be implied or inferred, with respect to the information or data furnished herein.

No part of this document may be reproduced, stored in a retrieval system or transmitted in any form or by any means, electronic, mechanical, photocopying, recording or otherwise, except as expressly permitted by the County of Chester, Pennsylvania.

Kennett Area Regional Planning Commission

Comprehensive Plan



Data Source: Municipal Comprehensive Plans